




Herbert Screw 2.5/3.0/3.5 Instrument Set

Sr	Product No.	Name	Specification	QTY	Unit	Outview
1	09S8001	Guide Pin	HL2.5/DB2.5/φ0.8*100	5	pcs	
2	09S8002	Double Drill Guide	HL2.5/DB2.5/φ0.8-1.9	1	pcs	
3	09S8003	Depth Gauge	HL2.5/DB2.5/φ1.2*100	1	pcs	

4 09S8004 Countersink Drill DB2.5 1 pcs



5 09S8005 Compression Sleeve DB2.5 1 pcs



6 09S8006 Cannulated Drill HL2.5/DB2.5/φ1.9 1 pcs



7 09S8007 Cannulated Screwdriver DB2.5/HL2.5/φ0.8 1 pcs



8	09S8008	Screwdriver	HL2.5/DB2.5	1	pcs
9	09S8009	Guide Pin	HL3.0、3.5/DB3.0、3.5/ Φ 1.1*120	5	pcs
10	09S8010	Double Drill Guide	HL3.0、3.5/DB3.0、3.5/ Φ 1.1-2.4	1	pcs
11	09S8011	Depth Gauge	HL3.0、3.5/DB3.0、3.5/ Φ 1.2*120	1	pcs



12 09S8012 Countersink Drill DB3.0 1 pcs



13 09S8013 Compression Sleeve DB3.0 1 pcs



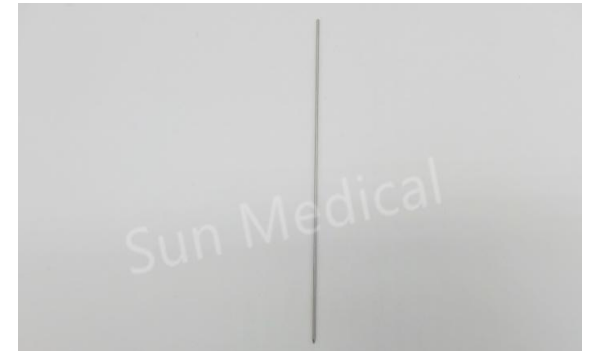
14 09S8014 Cannulated Drill HL3.0、3.5/DB3.0、3.5/Φ2.1 1 pcs



15 09S8015 Cannulated Screwdriver DB3.0/HL3.0/1.1 1 pcs



16	09S8016	Screwdriver	DB3.0/HL3.0	1	pcs
17	09S8017	Guide Pin	HL3.0、3.5/DB3.0、3.5/ Φ 1.1*120	5	pcs
18	09S8018	Double Drill Guide	HL3.0、3.5/DB3.0、3.5/ Φ 1.1-2.4	1	pcs
19	09S8019	Depth Gauge	HL3.0、3.5/DB3.0、3.5/ Φ 1.2*120	1	pcs



20 09S8020 Countersink Drill DB3.5 1 pcs



21 09S8021 Compression Sleeve DB3.5 1 pcs



22 09S8022 Cannulated Drill HL3.0/DB3.5/φ2.4 1 pcs



23 09S8023 Cannulated Screwdriver HL3.5/DB3.5/φ1.1 1 pcs



24 09S8024 Screwdriver DB3.5、4.0/HL3.5、4.0、5.0 1 pcs



25 09S8025 Quick Coupling Handle 1 pcs



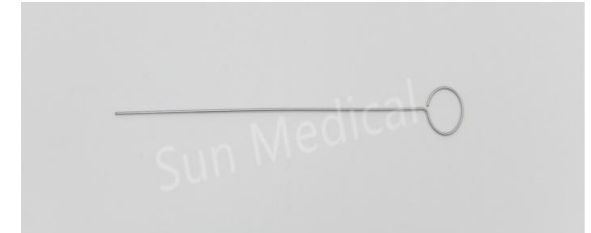
26 09S8026 Compression Handle 1 pcs



27 09S8027 Screw Forceps 1 pcs



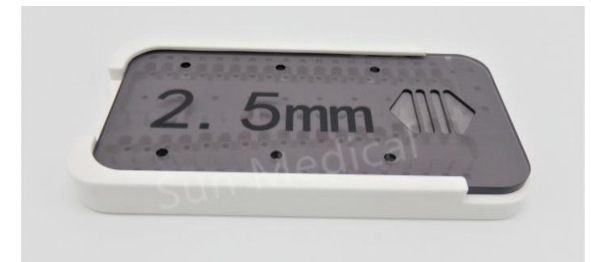
28 09S8028 Clean Pin DB2.5 / HL2.5 / ϕ 0.8 \times 120 1 pcs



29 09S8029 Clean Pin HL3.0、3.5 / DB3.0、3.5 / ϕ 1.1 \times 120 1 pcs



30 09S8030 Screw Box DB2.5 1 set



31 09S8031 Screw Box DB3.0 1 set



32	09S8032	Screw Box	DB3.5	1	set
33	09S8033	Instrument Box		1	set
		In total		45	pcs



Herbert Screw 2.5/3.0/3.5 Instrument Set



Herbert

Sr	Produ ct No.	Name	Speci ficat ion	QTY	Unit
1					
2					
3					
4					
5					
6					